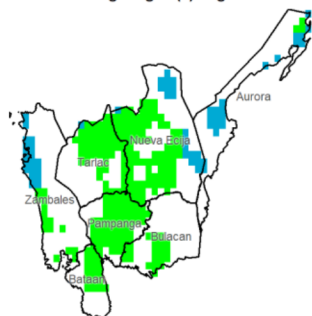


Region III (Central Luzon)

Water Availability for Rice
Prevailing Stage : None

Harvesting and/or
pre-planting
stage is possibly
ongoing.

Water Availability for Corn
Prevailing Stage : (II) Vegetative



Provincial Values

		Mon. Ave. Rainfall (mm)	Rice CS CCI (%)	Corn CS CCI (%)
Aurora	327.1		I 188.3 I 316.6	I 188.3 I 316.6
			II 177.1 II 245.6	II 177.1 II 245.6
			III 171.9 III 205.0	III 171.9 III 205.0
			IV 239.9 IV 243.5	IV 239.9 IV 243.5
Bataan	177.5		I 61.0 I 140.9	I 61.0 I 140.9
			II 54.6 II 94.8	II 54.6 II 94.8
			III 52.1 III 71.9	III 52.1 III 71.9
			IV 90.3 IV 93.6	IV 90.3 IV 93.6
Bulacan	275.3		I 85.6 I 157.6	I 85.6 I 157.6
			II 77.4 II 108.0	II 77.4 II 108.0
			III 73.7 III 81.2	III 73.7 III 81.2
			IV 124.2 IV 106.5	IV 124.2 IV 106.5
Nueva Ecija	337.1		I 121.3 I 236.0	I 121.3 I 236.0
			II 111.2 II 169.4	II 111.2 II 169.4
			III 106.5 III 133.6	III 106.5 III 133.6
			IV 168.2 IV 167.6	IV 168.2 IV 167.6
Pampanga	222.3		I 59.2 I 135.2	I 59.2 I 135.2
			II 53.3 II 87.9	II 53.3 II 87.9
			III 50.7 III 65.0	III 50.7 III 65.0
			IV 91.0 IV 86.6	IV 91.0 IV 86.6
Tarlac	282.2		I 78.3 I 179.4	I 78.3 I 179.4
			II 71.1 II 122.3	II 71.1 II 122.3
			III 67.8 III 94.0	III 67.8 III 94.0
			IV 113.5 IV 120.8	IV 113.5 IV 120.8
Zambales	373.0		I 130.9 I 295.9	I 130.9 I 295.9
			II 120.2 II 211.2	II 120.2 II 211.2
			III 115.5 III 167.5	III 115.5 III 167.5
			IV 182.9 IV 208.8	IV 182.9 IV 208.8

Crop Stage (CS) highlighted in **bold** is the dominant stage during the month of May

Rice CS:
(I) Nursery
(II) Vegetative
(III) Reproductive
(IV) Ripening

Corn CS:
(I) Establishment
(II) Vegetative
(III) Reproductive
(IV) Maturity

CCI Category:
Inadequate
Sufficient
Excess

Regional Summary

Rainfall was sufficient for both rice and corn crops throughout the month in most of the Region. Meanwhile, rainfall was excessive in Aurora and Zambales, which received an, which may be detrimental for the corn crops in the vegetative stage.

The three-month Standardized Precipitation-Evapotranspiration Index (SPEI3) values in the Central Luzon are within the normal rainfall range. Meanwhile, the rest of the region is in slightly wet conditions, which is beneficial to standing crops. The RX1day map showed 50 to 150 millimeters of rainfall, while the RX5day map showed 100 to 300 millimeters of rainfall, especially in the western part of the region.

NDVI

NDVI satellite
data not yet
available.

SPEI3 (Mar-Apr-May)



RX1day



RX5day

